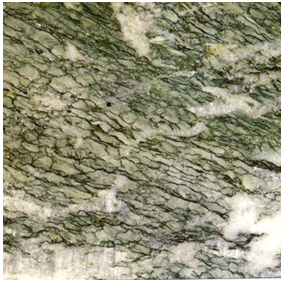


The Campan quarries, place known as Espiadet in Hautes-Pyrénées department, 20th century quarry face



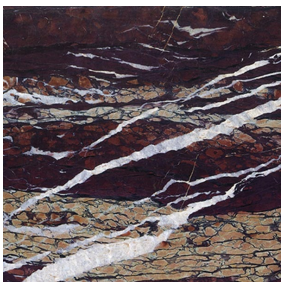
Campan rubané marble



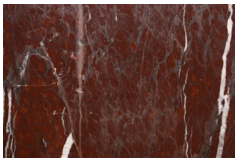
Green Campan marble



Pink and green Campan marble



Campan grand mélange marble



Red Griotte marble



Saint-Jean Cloister in Bagnères-de-Bigorre, 13th century, columns made out of red griotte marble



Portal of the Hôtel de Molinier-Catellan in Toulouse, 1556



Cheminée de la Renommée in the Château d'Ecouen, 16th century



A fireplace made out of Campan marble in the Château de Cadillac in the Gironde department, 17th century



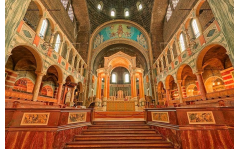
Grand Trianon, Palace of Versailles, columns made out of Campan grand mélange marble



The Queen's Staircase, Palace of Versailles, inlays made out of green Campan and Campan grand mélange marbles



Salon d'Hercule (Hercules Salon), Palace of Versailles



Westminster Cathedral, green Campan marble



Antique Louis XVI style mantel in Red Griotte marble ornamented with gilded bronze, 19th century (ref. 2588)



Antique Louis XIV style fireplace with acroterion made out of Rubané Campan marble, 19th century (ref. 2716)